



Bethlehem Art Association

Jan./Feb. 2025
Newsletter



Greetings for the New Year, BAA Members, and may it be a healthy and creative one for all.

I begin with confirming that we are now officially, the Bethlehem Art Association, Inc., having received our Certificate of Incorporation with the NY State establishing our Non-Profit status. This will allow us to reserve the Library's Community room further to their new reservation requirements. My thanks go to Peter Keitel for doing the ground work to make this happen. It was on my to-do list for too long. I can also report that David Chapin has now taken over as Treasurer.

January and February meetings will have some new art teachers to inspire us. I look forward especially to our January 7th Zoom meeting with Al Gury from Philadelphia which we are cosponsoring with the Colonie Art League (CAL). The BAA and CAL share many members, and so together we can afford Gury's presentation as something special to start of the New Year. Our February 18th meeting, is dedicated to YOU and your artwork submitted for critique, and will now be conducted by Prof. Scott Nelson Foster from Siena College.

I hope that these winter months will keep you at your easels in a warm room.

Lynda

BAA Mission Statement

The BAA is a focal point for all kinds of visual art activities in Bethlehem. We promote art, art activities, and artists in Bethlehem.

www.bethlehemartassociation.com

Please welcome new members:

Margo Janack, Becky Lee, John Oberlander and Teresa Ricci

President

Lynda Spielman

718-463-5679

lyndaspelman@aol.com

1st Vice President

Peter Keitel

pjkeitel@gmail.com

2nd Vice President

Open

Treasurer

David Chapin

Recording Secretary

Laurel Petersen

Community Spaces

Jacqueline Smith

TShock1882@aol.com

Membership Chair

Gary Mehlum: 482-8606

gmehlum@gmail.com

Newsletter

Ellie Prakken: 439-7559

ellieprakken@gmail.com

Exhibitions/Shows

Ellie Prakken

Publicity

Anne Levitt

Student Scholarships

Lynda Spielman

Webmaster

Peter Keitel

Susan Trotter

Workshops

Denise Crisafulli

Refreshments

Sue Nye



Meetings

**Tuesday,
Jan. 7, 6:45 p.m.**

VIA ZOOM!
Cosponsored
with CAL



Al Gury

*Professor of Painting and Drawing at the
Pennsylvania Academy of Fine Arts in Philadelphia*
Al will demonstrate Alla Prima Landscape

Al Gury is an artist, educator, and writer.

As a painter, Al explores the tension between representation and the formal possibilities of color, composition and content. Harmony and visual poetry are a focus of his interpretations of nature.

Deeply committed to art education, he teaches many courses on painting, drawing and art history, and is the founder and instructor of a large, free, after school art education program at PAFA for underserved inner city high school students. National and international workshops are also a regular part of his engagement in art education.



As a writer, Al Gury has written three books for Penguin-Random House on art methods and art history, *Alla Prima*, *Color for Painters* and *Foundations of Drawing*. Al's specialties include the traditions and use of color in painting, old master and contemporary painting methods, the history of drawing methods, and the traditions and practices in portrait and landscape painting.

Al Gury is a practicing painter, with regular one person exhibitions at the F.A.N. Gallery in Philadelphia, as well as galleries and museums in other states.

He has been very involved over the years in many community and social justice activities, including with homeless persons, inner city youth and the Mural Arts Project in Philadelphia.

His website is algury.com

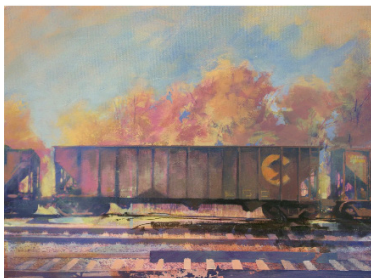
Tuesday,

Feb. 18, 6:45 p.m.

Member Critique with Scott Nelson Foster

Scott Nelson Foster has worked in a variety of two-dimensional media, including wax, glue and egg temperas, watercolor, oil, and serigraphy. His paintings have been featured in solo and juried exhibitions on the east and west coasts. He has recently completed chapel artwork commissioned by the St. Bernardine of Siena Friary. His interest in esoteric and unusual artistic practices has allowed him opportunities to work with iconographers, fresco painters, performance artists, and alchemists.

Mr. Foster received a B.A. in Fine Art from Northwest Nazarene University, and an M.F.A. in Painting and



Drawing from Utah State University. After teaching in Utah for a period, Scott relocated to upstate New York, where he paints and teaches at Siena College.

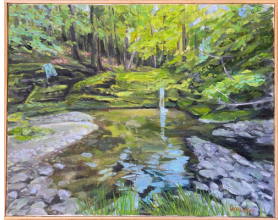
My paintings are reflections of changing ideas about the societal relationships to the land, the American experience, and the American dream. The landscape is an arena in which many different dramas of the American dream are played out. Trailers, houses, and strip-malls evoke shared experiences. This common denominator gives my work a broad resonance that allows even fragmentary visions to evoke complex narratives. My watercolors and oils eschew the particulars—what makes a location unique—and focus on the iconic—what makes disparate subjects universal.

Photography is essential to my creative process. I create images that mimic photography—and photography's implied veracity—that is not a photograph. My photorealistic paintings are created by piecing together images to create buildings and landscapes that do not necessarily exist in objective reality.

His website is scottnelsonfoster.com



News of Our Members



Summer Sanctuary



Portugal Summer Vista

Marsha Walton showed "Summer Sanctuary" at the Mark Twain Library in, CT, and "Portugal Summer Vista" at the Albany Center Gallery Member Show. Her painting "View from the Schoolhouse" sold at the Spencertown Art Academy.



View from the Schoolhouse

Kevin Kuhne is currently in "The Board Picks Winter Invitational Show" at the Jan Rutland Memorial Gallery upstairs at the National Bottle Museum in Ballston Spa which runs through February 15. The gallery will be closed the first 10 days of January. Nine artists are featured, also including Barb Lennox.



Beekman Harvest by Ann Madeo



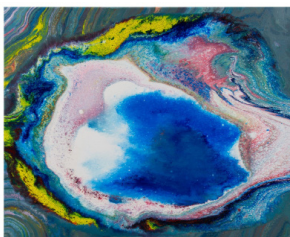
Crow's Neck Pass by Fred Morris

Diane Wozniak will have a show at the Voorheesville Public Library for the month of March. A reception will be held on Sunday, March 2 from 1:30 to 3:30 PM. All are invited.



Cooperative Extension Garden

Becky Lee will be exhibiting some of her artwork at the Bethlehem Public Library in the Northwest Hallway during the month of February.



Seeking Peace



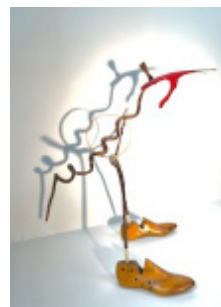
Parker's First Swim by Ginny Scholz



Mane Event by Margo Janack

Ginny Scholz, Ann Madeo, Margo Janack, and Fred Morris have paintings in a show at the Art Center in Troy. The show runs the month of January with a reception on January 31st at Troy Night Out.

John Smolinsky and Ellie Prakken are exhibiting in the Albany Center Gallery Member Show through January 11th.



Curious Conundrum by John Smolinsky



Sun Splash by Ellie Prakken



Meeting Recaps and News

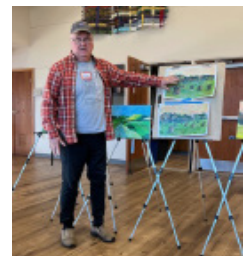
November Workshop with Tom Myott

Tom was a pleasure to listen to and absorb his teaching methods. He was constructive with his comments and gave us lots of painting time. For those of you who missed it, the general consensus was a day well spent with him and fellow artists.

This was a great opportunity to learn some new ways to think about your artwork. Initially, most participants worked on the same scene utilizing acrylic paint technique to create a canvas that vibrated with color. Tom also explored the process of utilizing a grid technique to create an effect of well placed strokes as a unique way of painting.

The session concluded with time for each artist to speak briefly of their work. Amazing to see the originality and different colorizations that came out of the individual endeavors from each participant.

Don't miss the next workshop as this is a fabulous benefit for BAA members. **Denise Crisafulli**



Barb Duclos and **Barbara Via** had a joint exhibit in the Bethlehem Public Library in December. Both are watercolor painters with distinctive styles, and this is the second show that they have done together. They were delighted that several pieces were sold from this exhibit and they received many compliments on their art.



BEST IN SHOW - HUDSON RIVER OVERLOOK BETHLEHEM - John Oberlander

November Meeting Fall Exhibit Reception

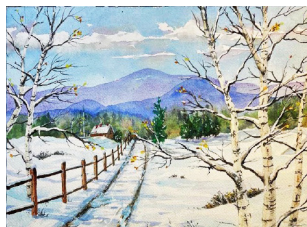
We had a beautiful Fall Member Exhibit in November at the Bethlehem Public Library. Ed Ticson, our Judge, gave a very informative and valuable critique and awarding of prizes. He always engages the prize winning artists in talking about their work, which is particularly rewarding.

We had 58 entries and several members including Criss Maicaione, Patricia Davis, and Ben Gilmore sold paintings from the Exhibit.

The full Exhibit can be seen on the website:
bethlehemartassociation.com under NEWS.



Marche de Fleurs by Criss Macaione



Winter's Arrived by Ben Gilmore



Afternoon Shadows by Patricia Davis



Meeting Recaps and News

BAA Member One-Day Show and Sale Saturday Nov. 9, 2024



Jacqueline Smith had a successful exhibit of her oil and pastel paintings.

Members had another successful Member Show and Sale in November. Many thanks to Dee Foley and Lynda Spielman (above) for organizing the event.

December Meeting

Photography Presentation by Members Peggy Becker and John Tobison

Peggy and John gave a very informative presentation on photography. Peggy has become a fulltime photographer in the last four years, after a life time interest in the subject. You can see more of her work on her website PBeckerPhoto.com. Since 2015 John has become a serious fine art photographer, specializing in landscapes, after a lengthy career in technology. His work can be found at NordicLightGallery.com.

Photography is art and snapping the picture is only part of the story. Envisioning the work through subject, composition, lighting (key to photographic images), mood and presentation are common aspects of the creative process.

Photographers can't create solely from imagination. They need the real world. They have to think about subject, style/technique, location, what story they are telling, foreground, background, perspective, and like all art, they have to have good composition. Fine art photographers do the same sort of artistic thinking that other artists do, and photography is a useful tool for all artists.

"Lighting is everything in photography".

John gave a very enlightening demonstration on how he can manipulate an image in Luminar Neo, a new software program. Photoshop and Lightroom are other software programs. There are lots of different kinds of cameras and equipment, but in the end, "It's not the gear, it's the artist"!



Bethlehem Art Association, Inc.

Peter Keitel

The Bethlehem Art Association has been certified by the New York State Department of State as a Not-for-Profit Public Benefit Corporation. The Bethlehem Public Library recently set new requirements that define three types of organizations that can use the Community Room. This status meets library requirements. We had been threatened with a denial to use our traditional monthly meeting space.

This new status will require some changes such as the formation of a board of directors and the adoption of bylaws. There will be member involvement in these steps. However, it is not expected that there will be any significant changes in the overall manner in which the organization operates.

If anyone has questions about this change, please contact Lynda Spielman or Peter Keitel.



Artist Opportunities

Winter Art Challenge



A new challenge photo.
“Frosty Morning”. Here we have a naturally occurring abstract image that should allow for a wider range of interpretations than usual.
For more see: www.bethlehemartassociation.com/baa-art-challenge

Bethlehem Chamber of Commerce

Pat Viglucci continues exhibiting his paintings at the Bethlehem Chamber of Commerce for the month of January followed by Jacqueline Smith's artwork for February and March. April and May are available for showing your paintings, so consider signing up. If interested please email Diane Wozniak at dcwozniak@gmail.com.



Calling all artists!

We are excited to announce that submissions are now open for the 2025 Annual Nature Art Show at Thacher Park!

Beginning March 15, they will turn the Helderberg Room into an art gallery showcasing works that encourage visitors to view nature in a new way through the work of local artists. Submissions should be original works of nature-based subjects, excluding people and buildings.

As in past years, this is a juried art show. To get the submission form, use this email address JBThacher@parks.ny.gov and request the form. Submissions will be accepted until Thursday, February 12, 2025. For further guidelines and details on how to submit work, please see the attached information and submission form.

Art submission is open to the public and there is no cost to submit work for consideration; the \$15 entry fee is only collected for accepted artists at the time of drop-off.

“Art washes away from the soul the dust of everyday life.”

“Inspiration exists, but it has to find you working.”

Pablo Picasso



Venues

BAA Community Exhibit Schedule Jan. 2025 through Apr. 2025

Please sign up!

Sign up at a monthly meeting to schedule a showing of your work
or contact Jacqueline Smith at 518-489-1882 or TShock1882@aol.com

VENUES RESERVED FOR BAA MEMBERS

	JAN	FEB	MAR	APR
BANK OF COXSACKIE Rte. 9W, Glenmont - 10-13 spaces	OPEN		OPEN	
MOHAWK HUDSON LAND CONSERVANCY Prefers Nature Themes	<i>MHLC has moved to 195 New Karner Rd. in the Pine Bush Preserve building and is developing venue space in the new offices.</i>			
BETHLEHEM CHAMBER OF COMMERCE 3 small 3 large paintings Main Square, Suite 27 318 Delaware Ave. Delmar Contact Diane Wozniak dcwozniak@gmail.com or 518-698-1819	PAT VIGLUCCI	JACQUELINE SMITH	JACQUELINE SMITH	OPEN

VENUES FREQUENTLY AVAILABLE FOR BAA MEMBERS

Berne Public Library, 1763 Helderberg Trail, Berne, NY

Contact Ann Hein at 914-953-0804 or ahein6711@yahoo.com

The Massry Residence at the Daughters of Sarah Senior Community:

Contact Bridgit Rockwell at 518-724-3406. Space for 15 pictures

Merriman and Pfister, An Artisan's Marketplace. 340 Delaware Ave., Delmar

Contact Kathy Agneta at 518-588-7268

Big Eye Gallery Fine Arts and Crafts, 270 County Route 405, South Westerlo, NY

Contact Hope Konecny at 518-66-5833

Bethlehem Public Library, Delaware Ave., Delmar:

Please use the Library website at "Book a Space" to reserve a date to hang paintings.

The system will send a confirmation.

Beverwyck Independent Retirement & Assisted Living:

Contact Jessica Steber, 518-451-2111 or Jessica.Steber@SPHP.com

Beverwyck Lane/Autumn Drive, Slingerlands, 15 spaces, availability.

Uncommon Grounds Coffee & Bagels, 1235 Western Ave., Albany:

Contact Saratoga-Arts.org for more information, but you must be a member of their group to show your paintings at any Uncommon Grounds location.

Voorheesville Public Library: 51 School Rd., Voorheesville

Contact Lynn Kohler at 518-765-2791 to schedule a show and reception.



CALENDAR IS SUBJECT TO REVISION

This Year's Main Events

*All Monthly Meetings gather at 6:45PM & begin at 7PM
in the Bethlehem Public Library Community Room unless otherwise noted*

**Pay close attention to DAYS, DATES, and LIBRARY or ZOOM
Dates with asterisk's are not yet confirmed**

- | | |
|---------------------------------|---|
| Friday, September 27 ~ | Prof. Matthew McElligott, Sage College ~ Perspective |
| Tuesday, October 22 ~ | Acrylic Demonstration with Tom Myott |
| Monday, November 4 ~ | Fall Member Exhibit Submissions Drop-off at
Bethlehem Public Library ~ 4:00pm - 6:00pm |
| Saturday, November 9 ~ | One-Day Show and Sale ~ contact Dee Foley |
| Saturday, November 16 ~ | Workshop ~ Acrylic and Oil workshop with Tom Myott |
| Tuesday, November 19 ~ | Fall Member Exhibit Reception ~
Judge's Comments by Ed Ticson |
| Saturday, November 30~ | Fall Show Removal by 5:00pm (No Exceptions) |
| Wednesday, December 18 ~ | Photography Presentation ~
Members Peggy Becker and John Tobison |
| Tuesday, January 7 ~ | Al Gury ~ Alla Prima Landscape
ZOOM ~ Joint with Colonie Art League |
| Tuesday, February 18 ~ | Member Critique ~ Scott Nelson Foster |
| Thursday, March 20 ~ | Intuitive Painting with Natalie Boburka |
| Thursday, April 10 ~ | Annual Planning Meeting ~ ZOOM |
| Saturday, April 12 ~ | Workshop ~ Intuitive Painting with Natalie Boburka |
| Thursday, April 24 ~ | Pastel Demo with Mark Grasso |
| Friday, May 2 ~ | Spring Member Exhibit Submissions Drop-off at
Bethlehem Public Library ~ 4:00pm - 6:00pm |
| Wednesday, May 21 ~ | Spring Member Exhibit Reception with Scholarship Awards
Judge TBD |
| Friday, May 30 ~ | Spring Show Removal by 5:00pm (No exceptions) |
| Thursday, June 19 ~ | Picnic ~ Five Rivers Environmental Center |